



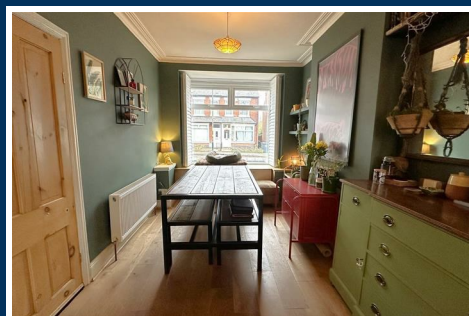
104 Gristhorpe Road

Selly Park, Birmingham, B29 7SL

Offers In The Region Of £280,000



A LOVELY CHARACTER SEMI-DETACHED HOME WITH NO CHAIN! Located in this much sought-after, tree lined road on the Selly Park / Stirchley border is this lovely Edwardian, three bedroom semi-detached home which offers great space and light alongside some great style and character throughout and has the bonus of being on the 'sunny side' of the street! Offering great access to all of the nearby places of interest including Stirchley's vibrant high street, excellent transport links via the nearby train stations at Bournville and Selly Oak with their excellent commuter links to the nearby QE Hospital, Birmingham University and the City Centre. Selly Oak and Cotteridge's amenities are also close at hand. You couldn't be better placed! The accommodation on offer briefly comprises; fore garden, entrance vestibule, hallway, open-plan reception rooms, re-fitted kitchen, ground floor bathroom, lean-to and a mature garden with storage and being south facing. To the first floor there are two good double bedrooms, further single bedroom and a 1st floor wc. To book your viewing please call our Bournville sales team!



Approach

This well presented and character three bed semi-detached home is approached via a low level wall with a low maintenance from garden with raised decorative flowerbeds with low level hedging leading to a hardwood front entry door with opening window above opening into:

Entrance Vestibule

With red quarry style tiled floor covering, meter cupboard, cornice to ceiling and glazed internal door with window above opening into:

Entrance Hallway

With continued red quarry tiled effect floor covering, ceiling light point, wall mounted electric fuse box and stripped pine internal door opening into:

Open Plan Living and Dining Room

25'9" into bay x 12'4" max x 8'10" min (7.87 into bay x 3.77 max x 2.7 min)

Dining area with double glazed bay window with in-built shutters to the front aspect, in-built window seat and storage into bay, central heating radiator, hardwood wooden floor covering, ceiling light point, cornice to ceiling and open walkway into living area. With double glazed window to the rear aspect, central heating radiator, continued hardwood wooden floor covering, ceiling light point, shelving to alcoves, inset log burning stove with exposed brick and slate hearth and internal door opens into:

Inner Lobby

With continued hardwood wooden floor covering, staircase with exposed brick giving rise to the first floor landing, ceiling light point, door opening into under stairs storage cupboard providing useful storage and original style interior door opens into:

Re-Fitted Kitchen

11'3" x 6'11" (3.44 x 2.13)

With a navy selection of wall and base units with hardwood wooden block work surface, contemporary tiling to splash backs, integrated Bosch oven, integrated Bosch induction hob with in-built extractor over, integrated slimline dishwasher, one and a half ceramic sink and drainer with hot and cold mixer tap, in-built larder cupboard, exposed feature brickwork, tiled floor covering, contemporary column wall mounted radiator, recessed spots to ceiling, double glazed window to the side aspect and stripped pine inter door opening into:

Outer Lobby

7'1" x 4'1" (2.17 x 1.26)

With continued tiled floor covering, hardwood glazed exterior door giving access to the side lean-to, plumbing facility for washing machine and tumble dryer, space facility for fridge freezer, ceiling light point and stripped pine interior door opens into:

Re-Fitted Ground Floor Bathroom

7'9" x 6'9" (2.37 x 2.07)

With a contemporary bathroom suite with panel bath

with glass shower screen and mains powered shower over, wash hand basin on pedestal with hot and cold mixer tap, wall mounted heated chrome towel rail, single glazed window to the rear aspect, wall mounted extractor, frosted double glazed window to the side aspect, recessed spots and tiled floor covering.

Side Lean-To

With storage area, single glazed door giving access to the rear garden, wooden gate giving access to the front aspect and exterior door giving access out to the rear garden.

Rear Garden

With initial block paving leading out to the main garden area being laid mainly mature lawn with panel fencing to borders and excellent outside storage shed being wooden construction and providing further potential.

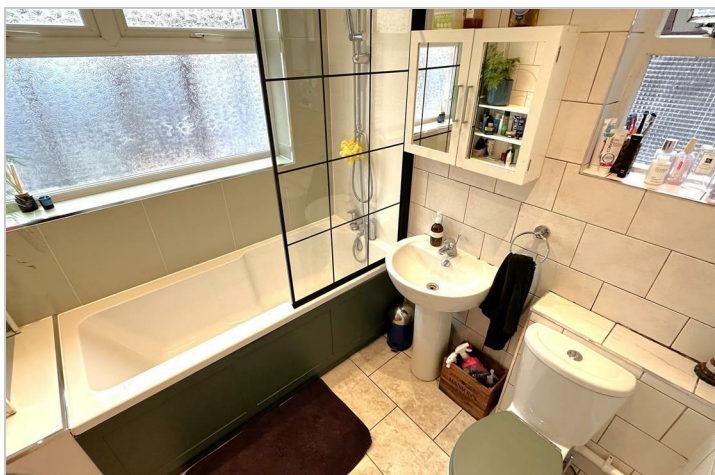
First Floor Accommodation

From inner lobby turning staircase gives rise to the first floor landing with frosted double glazed window to the side aspect, two ceiling light points, loft access point with pull down ladder and providing loft storage, exposed wooden floorboards and doors opening into:

Separate WC

4'5" x 2'5" (1.35 x 0.74)

With wall hung wash hand basin, push button low flush WC, ceramic towel rail and ceiling light point.



Bedroom One

12'2" x 11'2" (3.72 x 3.42)

With double glazed window to the front aspect, ceiling light point, recessed spots to ceiling and central heating radiator.

Bedroom Two

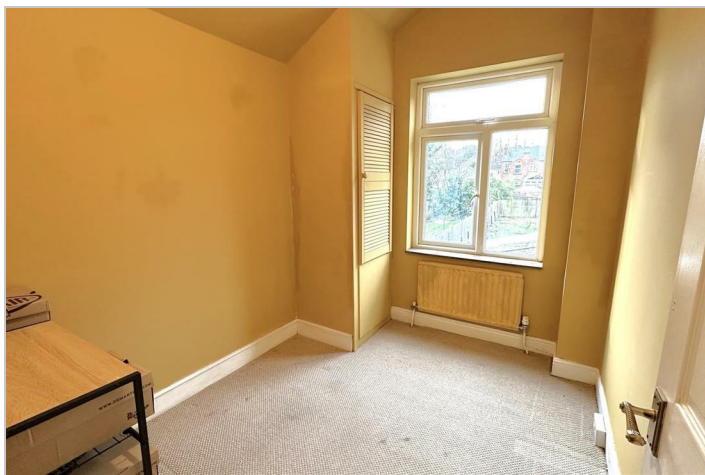
12'1" x 9'2" (3.7 x 2.8)

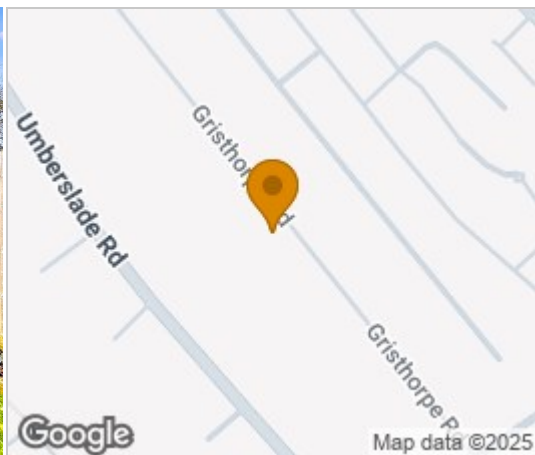
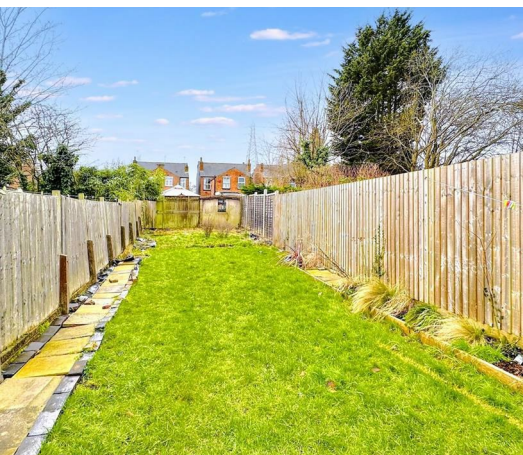
With double glazed window to the rear aspect, in-built shelving to alcoves, recessed spots to ceiling and central heating radiator.

Bedroom Three

9'4" x 7'1" (2.86 x 2.16)

With double glazed window to the rear aspect, in-built boiler cupboard housing main combi-boiler, in-built storage cupboard, ceiling light point and central heating radiator.





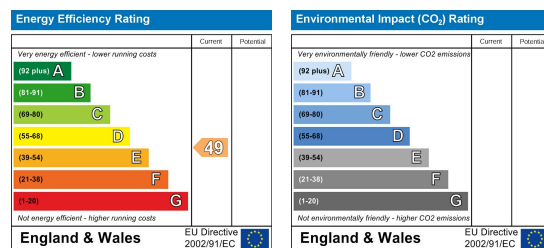
Floor Plan



Viewing

Please contact our Bournville Office on 0121 458 1123 if you wish to arrange a viewing appointment for this property or require further information.

Energy Efficiency Graph



These particulars, whilst believed to be accurate are set out as a general outline only for guidance and do not constitute any part of an offer or contract. Intending purchasers should not rely on them as statements of representation of fact but must satisfy themselves by inspection or otherwise as to their accuracy. No person in this firm's employment has the authority to make or give any representation or warranty in respect of the property.

1. Additional Services / Referral Fees

1.1 By law, the Agent must tell you if it or any connected person intends to earn any commission from offering you other services. If the Agent or any connected person earns money from any of these services, the Agent or connected person would keep the commission. The following services may be offered by the Agent or connected persons: lettings, financial services, surveying services and conveyancing.